

SOPORTE DE TV

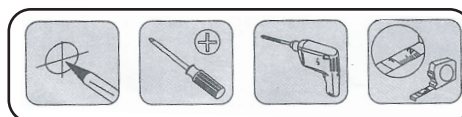
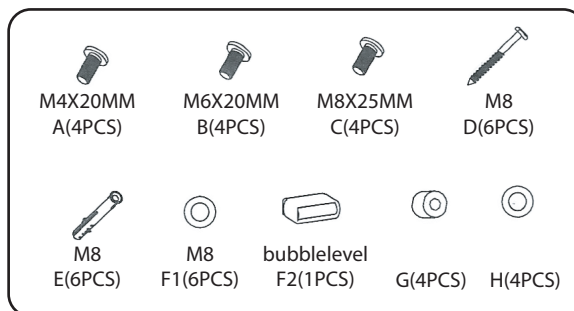
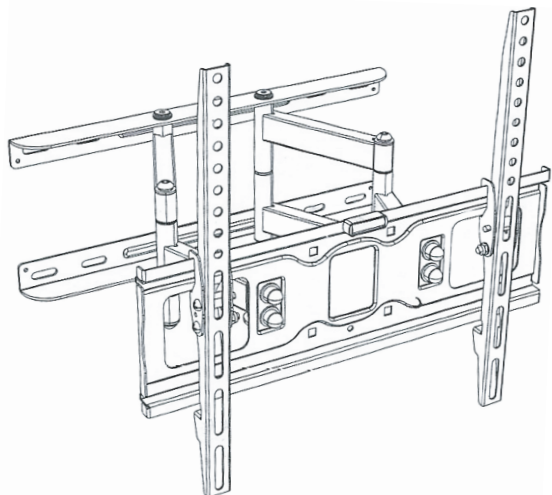
26-55 MULTIÁNGULO



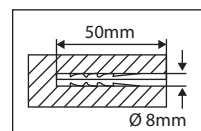
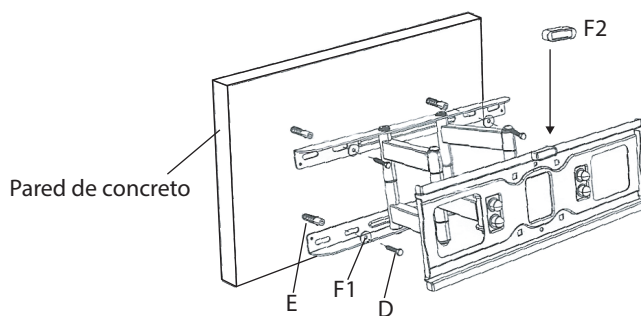
Cod. SJ50

Formato sin escala

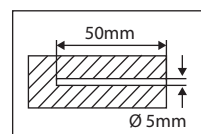
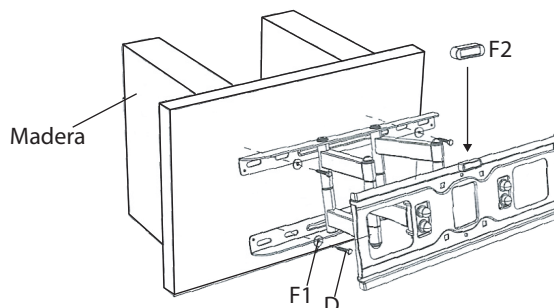
Guía de instalación



PASO1A Montaje en pared de concreto

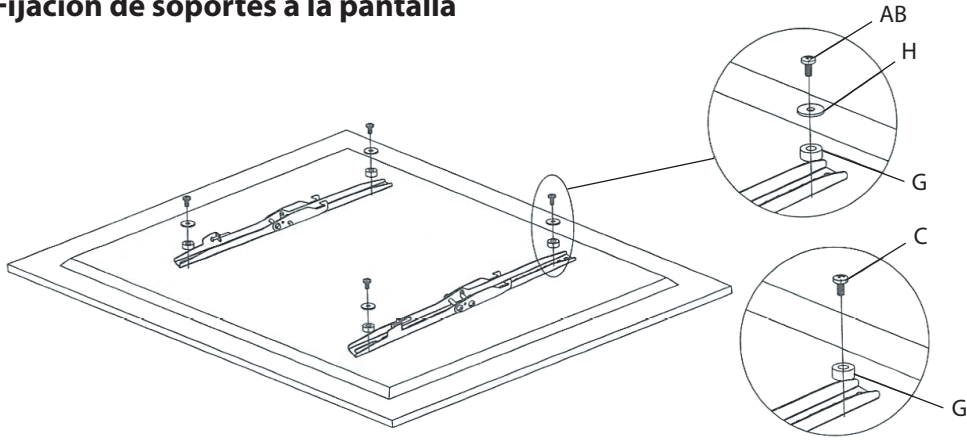


PASO1B Montaje en madera



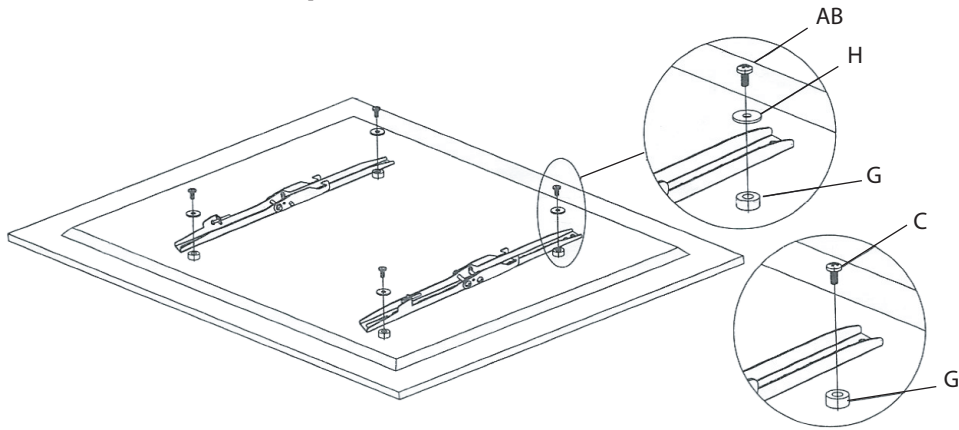
PASO2A

Fijación de soportes a la pantalla



PASO2B

Para televisores con respaldo curvo u obstrucción



PASO3

Para colgar el televisor en la placa de la pared

